

Bloomfield Middle School Chromebook Pilot



You should have with you:

1. Chromebook (keep the box)
2. AUP form
3. Network password
4. Cover

Agenda

1. Why 1:1
2. AUP
3. Care/What if?
4. Procedures
5. Expectations
6. Tips and Tricks
7. Questions



Why Chromebook 1:1?

- Connects students to the world
- Prepares for 21st century: collaboration, problem solving, student-centered
- Intuitive
- Producer vs. consumer of information.
- Battery Life



Acceptable Use Policy (AUP)

- The Chromebook is **your** responsibility: return in same condition as issued
- Digital Citizenship
- BOE Policy 2361 “Acceptable Use of Computers“ & 1-to-1 Acceptable Use Policy Handbook.
- Chromebook and data are Bloomfield District Property
- Filters active at home and school.
- Privilege, not a right

Expectations



- Take care of YOUR Chromebook
- Be prepared: **charged chromebook** in school every day
- Leave charger at home
- In locker during Lunch and Phys. Ed.

How do I take care of it?

- Decorate the case, not the chromebook!
- Don't place anything on the keyboard.
- When unplugging-do so gently.
- Keep all food/drinks away to prevent damage.
- When not using, close to save the battery.



- Carry the Chromebook closed and with two hands.
- **Be prepared: charge your Chromebook every night**
- Everything will be done to return this Chromebook to you for next academic year.
- Heavy objects will break the screen.



Problem with Chromebook? Bring to the Media Center.

Loaners provided during repair. Limited quantities.

What if something happens to my Chromebook?



- Report immediately!
- **Lost/stolen** outside of school=report to police
- **1st incident** = no cost for the replacement. Parent Conference may be required.
- **2nd incident** =\$55.00. The fine must be paid before a replacement is issued.
- **3rd incident** =\$110.00. The fine must be paid before a replacement is issued.
- **4th incident** =cost of the Chromebook. Parental Conference required. The fine must be paid before a replacement is issued.

What if something happens to my Chromebook?

- **Lost Chromebook**=students and their parents are responsible for replacing the Chromebook.
- **Stolen Chromebook**=Parent Conference required. The school requires a copy of the filed police report, before a replacement Chromebook is issued.
- If the tech fee has not been paid, the student will be responsible for the full repair cost.
- Discipline/ ACER



tips & tricks

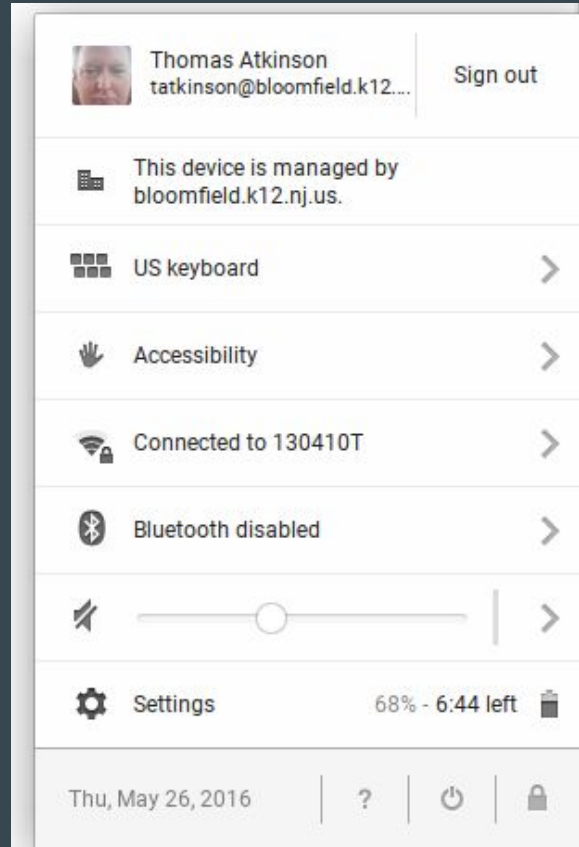


BLOOMFIELD PUBLIC SCHOOLS





Connect to the Internet





Logging In-Must Be With A Bloomfield Account

123456@edu.bloomfield.k12.nj.us




K-8 = 8 character password

Need Help? Press CTRL, ALT, ?





Chromebook in the Classroom

-  Google Docs: interact, collaborate, organize, research
-  Google Forms: quizzes, tests, exit tickets, surveys
-  Google Classroom: interaction with teacher/classmates, discussion, assignments, homework
- Apps/Extensions



Logging into Chrome



Chromebook

- Log into Chromebook
- Automatically logs user into Chrome



Laptop

- Launch Chrome browser
- Sign into Chrome



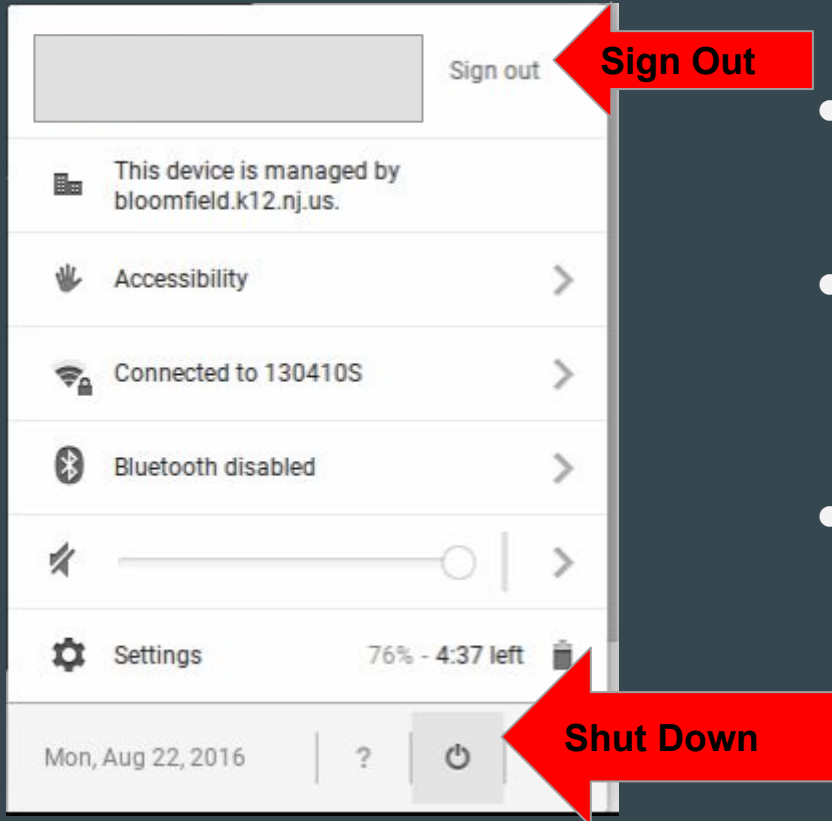
Your settings travel with you

It does not matter which computer you log into because your settings, bookmarks, themes, apps and extensions travel with you and your account.





Signing Off



- Shut Down powers down the Chromebook and logs the user out of their Chromebook.
- Sign Out logs a user out of the Chromebook.
- Closing the Chromebook lid puts the Chromebook in Sleep mode.
- Important to shut down between periods of extended non-use.

Take a survey-WIN a PRIZE!

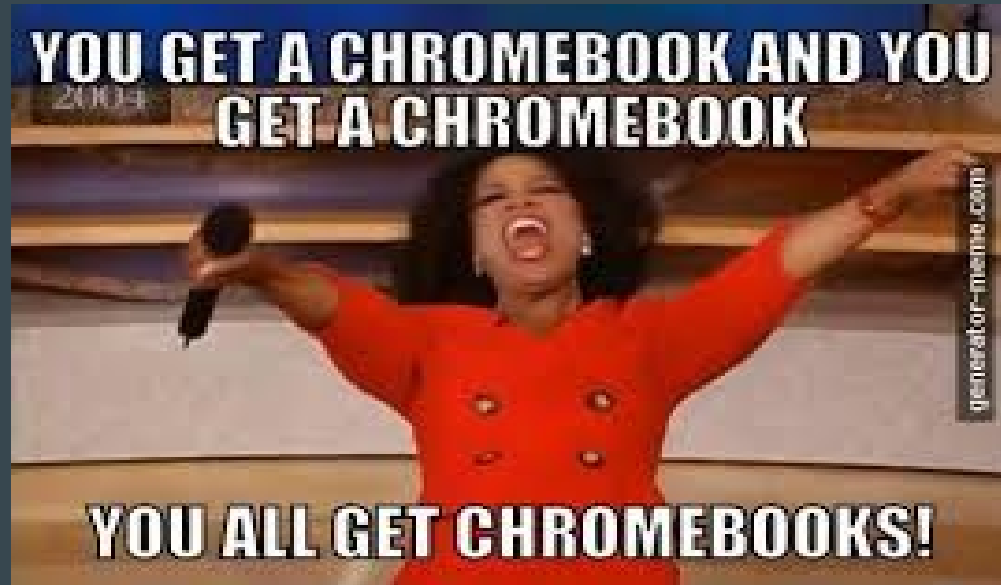
Feedback on distribution process

BMS Website

Complete for chance to win gift cards for school
supplies!

Return signed AUP at Media Center Exit

Congratulations! Enjoy your new Chromebook courtesy of Bloomfield Public Schools!





Questions