



Assessment Profile 2012

Bloomfield Public Schools

Presented by
Katherine V. Martinez, Director of Instruction and Testing



State Assessment Program

- All students are required to participate in the State Assessment Program for grades 3-8, and grade 11.
- State assesses students in the areas of Language Arts, Mathematics and Science (grades 4, 8 and Biology students only).
- Alternative Proficiency Assessment (APA) portfolios replace the NJ ASK/HSPA requirements for specific cases
- NJ DOE is replacing the AYP requirement with Student Growth Percentile for grades 3-8 and graduation rate for grade 11.

New Accountability Mandates

Grades 3-8: SGP

- Student Growth Percentiles
 - Focuses on student growth/ improvement over time
 - Tells us whether a student grew faster or slower than other NJ students with similar NJ ASK history (same grade, same NJ ASK test, similar results)
 - NJ DOE defines typical growth between 35th and 65th percentile



District Snapshot

Three-Year Trends: ELA

2010-2012	District Total Proficiency %		
	3 2010	4 2011	5 2012
District	64.7%	68.4%	55.7%
DFG	62.1%	65.4%	63.8%
State	59.7%	58.5%	62.1%

2010-2012	District Total Proficiency %		
	4 2010	5 2011	6 2012
District	66.4%	63.9%	68.0%
DFG	62.3%	62.6%	66.5%
State	59.6%	60.9%	64.5%

2010-2012	District Total Proficiency %		
	5 2010	6 2011	7 2012
District	63.0%	71.7%	51.9%
DFG	64.5%	68.5%	61.2%
State	63.1%	66.7%	61.0%

2010-2012	District Total Proficiency %		
	6 2010	7 2011	8 2012
District	65.3%	54.6%	76.9%
DFG	66.5%	63.5%	84.3%
State	65.3%	63.3%	82.4%

District Snapshot

Three-Year Trend: Mathematics

2010-2012	District Total Proficiency %		
	3 2010	4 2011	5 2012
District	85.9%	87.0%	82.6%
DFG	81.5%	82.7%	86.2%
State	78.1%	79.3%	83.2%

2010-2012	District Total Proficiency %		
	4 2010	5 2011	6 2012
District	81.8%	82.1%	78.5%
DFG	80.2%	83.3%	81.2%
State	77.0%	80.6%	78.8%

2010-2012	District Total Proficiency %		
	5 2010	6 2011	7 2012
District	84.0%	83.5%	58.5%
DFG	80.8%	79.2%	63.3%
State	78.7%	77.3%	63.2%

2010-2012	District Total Proficiency %		
	6 2010	7 2011	8 2012
District	72.9%	57.4%	61.9%
DFG	72.8%	65.6%	71.8%
State	71.8%	65.7%	71.7%

Berkeley School

ELA				
Grade	School	District	DFG	State
3	58.9%	70.6%	69.5%	63.0%
4	40.0%	61.4%	58.4%	62.7%
5	46.2%	55.7%	63.8%	62.1%
6	43.1%	68.0%	66.5%	64.5%

Math				
Grade	School	District	DFG	State
3	56.1%	81.0%	81.1%	78.4%
4	77.8%	81.3%	80.2%	77.4%
5	74.2%	82.6%	86.2%	83.2%
6	79.3%	78.5%	81.2%	78.8%

Students Less Than a Year in School			
Grade	Total	Part Prof ELA	Part Prof Math
3	10	6	5
4	10	5	2
5	13	9	4
6	5	3	3

Brookdale School

ELA				
Grade	School	District	DFG	State
3	82.2%	70.6%	69.5%	63.0%
4	84.4%	61.4%	58.4%	62.7%
5	72.7%	55.7%	63.8%	62.1%
6	80.8%	68.0%	66.5%	64.5%

Math				
Grade	School	District	DFG	State
3	100.0%	81.0%	81.1%	78.4%
4	97.8%	81.3%	80.2%	77.4%
5	88.9%	82.6%	86.2%	83.2%
6	80.8%	78.5%	81.2%	78.8%

Students Less Than a Year in School			
Grade	Total	Part Prof ELA	Part Prof Math
3	4	0	0
4	4	0	0
5	7	2	2
6	4	2	2

Carteret School

ELA				
Grade	School	District	DFG	State
3	81.8%	70.6%	69.5%	63.0%
4	58.9%	61.4%	58.4%	62.7%
5	53.6%	55.7%	63.8%	62.1%
6	74.5%	68.0%	66.5%	64.5%

Math				
Grade	School	District	DFG	State
3	92.7%	81.0%	81.1%	78.4%
4	69.6%	81.3%	80.2%	77.4%
5	85.5%	82.6%	86.2%	83.2%
6	76.5%	78.5%	81.2%	78.8%

Students Less Than a Year in School			
Grade	Total	Part Prof ELA	Part Prof Math
3	9	1	1
4	9	5	7
5	8	2	1
6	3	0	2

Demarest School

ELA				
Grade	School	District	DFG	State
3	70.7%	70.6%	69.5%	63.0%
4	82.8%	61.4%	58.4%	62.7%
5	56.3%	55.7%	63.8%	62.1%
6	79.2%	68.0%	66.5%	64.5%

Math				
Grade	School	District	DFG	State
3	79.3%	81.0%	81.1%	78.4%
4	89.5%	81.3%	80.2%	77.4%
5	84.5%	82.6%	86.2%	83.2%
6	81.8%	78.5%	81.2%	78.8%

Students Less Than a Year in School			
Grade	Total	Part Prof ELA	Part Prof Math
3	5	2	1
4	3	0	0
5	5	3	1
6	3	3	2

Fairview School

ELA				
Grade	School	District	DFG	State
3	72.9%	70.6%	69.5%	63.0%
4	42.2%	61.4%	58.4%	62.7%
5	52.6%	55.7%	63.8%	62.1%
6	50.0%	68.0%	66.5%	64.5%

Math				
Grade	School	District	DFG	State
3	78.9%	81.0%	81.1%	78.4%
4	68.7%	81.3%	80.2%	77.4%
5	79.5%	82.6%	86.2%	83.2%
6	63.1%	78.5%	81.2%	78.8%

Students Less Than a Year in School			
Grade	Total	Part Prof ELA	Part Prof Math
3	10	3	5
4	13	10	8
5	6	6	4
6	7	5	3

Franklin School

ELA				
Grade	School	District	DFG	State
3	60.4%	70.6%	69.5%	63.0%
4	46.8%	61.4%	58.4%	62.7%
5	51.9%	55.7%	63.8%	62.1%
6	65.3%	68.0%	66.5%	64.5%

Math				
Grade	School	District	DFG	State
3	79.2%	81.0%	81.1%	78.4%
4	70.5%	81.3%	80.2%	77.4%
5	83.3%	82.6%	86.2%	83.2%
6	79.6%	78.5%	81.2%	78.8%

Students Less Than a Year in School			
Grade	Total	Part Prof ELA	Part Prof Math
3	6	5	3
4	7	4	4
5	4	3	1
6	2	1	1

Oak View School

ELA				
Grade	School	District	DFG	State
3	94.9%	70.6%	69.5%	63.0%
4	82.2%	61.4%	58.4%	62.7%
5	76.9%	55.7%	63.8%	62.1%
6	89.7%	68.0%	66.5%	64.5%

Math				
Grade	School	District	DFG	State
3	97.4%	81.0%	81.1%	78.4%
4	95.6%	81.3%	80.2%	77.4%
5	89.7%	82.6%	86.2%	83.2%
6	89.7%	78.5%	81.2%	78.8%

Students Less Than a Year in School			
Grade	Total	Part Prof ELA	Part Prof Math
3	3	1	0
4	2	0	0
5	1	0	0
6	0	0	0

Watsessing School

ELA				
Grade	School	District	DFG	State
3	43.6%	70.6%	69.5%	63.0%
4	61.9%	61.4%	58.4%	62.7%
5	45.2%	55.7%	63.8%	62.1%
6	68.0%	68.0%	66.5%	64.5%

Math				
Grade	School	District	DFG	State
3	71.8%	81.0%	81.1%	78.4%
4	90.5%	81.3%	80.2%	77.4%
5	78.6%	82.6%	86.2%	83.2%
6	82.0%	78.5%	81.2%	78.8%

Students Less Than a Year in School			
Grade	Total	Part Prof ELA	Part Prof Math
3	4	2	1
4	7	2	0
5	6	3	1
6	5	0	2

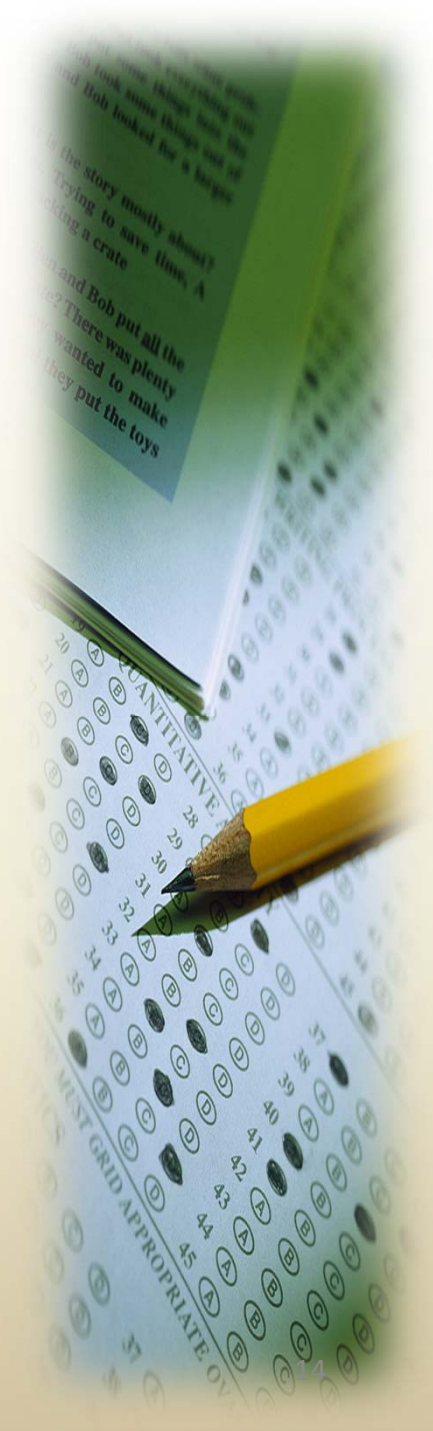
Secondary Program

ELA			
Grade	School	DFG	State
7	51.9%	61.2%	61.0%
8	76.9%	84.3%	82.4%

Math			
Grade	School	DFG	State
7	58.5%	63.3%	63.2%
8	61.9%	71.8%	71.7%

ELA			
Grade	School	DFG	State
11	94.1%	92.9%	91.5%

Math			
Grade	School	DFG	State
11	75.8%	79.7%	79.3%

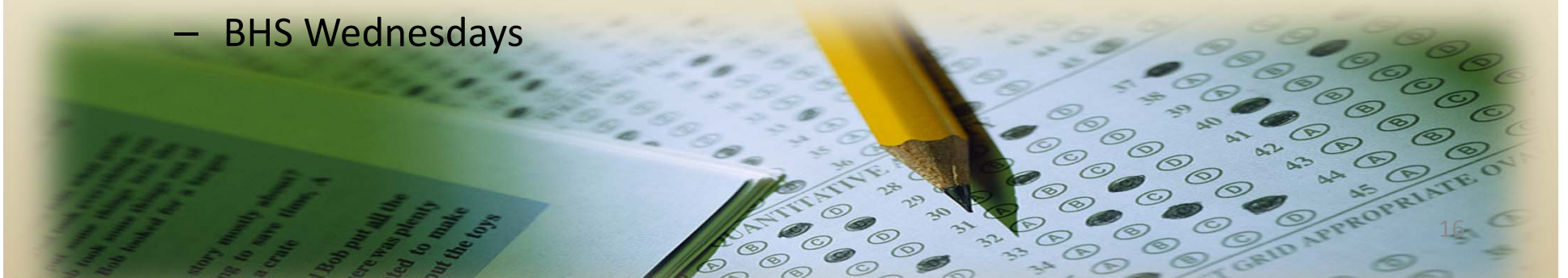


QSAC DIP Initiatives

- **A district improvement plan was developed in collaboration with the NJ DOE due to the 2011 QSAC failures. Mandated implementation of DIP began 2011-2012.**
 - STAR assessment
 - Response to Intervention (RtI) tiered support system
 - Wee Write and 6+1 Traits writing program in K-8. Writing assessments given four times a year utilizing the NJASK Holistic Scoring Rubric.
 - Curriculum aligned with the New Common Core State Standards for curricula in ELA K-2, 9 and 10, and Math K-8 in partnership with Standard Solutions and Conquer Mathematics - both educational consulting firms.
 - Wilson Foundations for K-2, and Certifying at least one teacher in every building in the Wilson Reading System.
 - Accelerated Math Intervention grades 1-8 will give support to Tier 2 and 3 students. Data from AMI will help drive small group instruction for students below grade level. Accelerated Reader in grades 3-8 in order to better track student progress in reading comprehension. Data from AR will be utilized to differentiate instruction.
 - New schedule in all K-6 schools with a Flex period for Intervention/additional instructional time. New Block schedules grades 7-8 with daily 88-minute blocks for ELA and Math.
 - Professional Learning Communities (PLCs) in grades K-8.
 - Grades 9-12 will implement PLCs in 2012-2013.

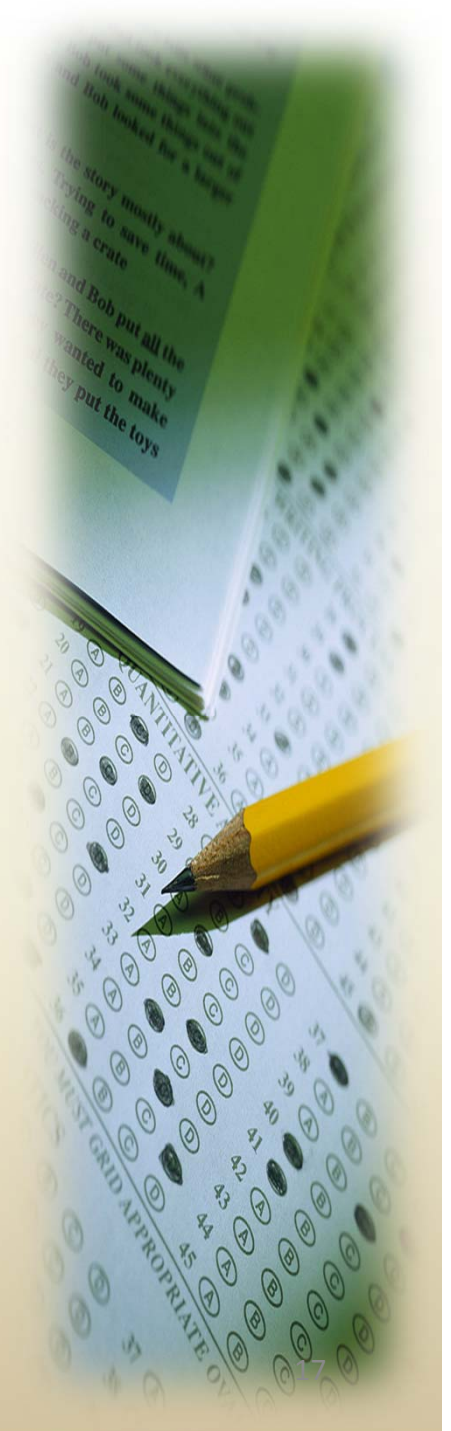
Going Forward – Curriculum and Instruction

- Response to Intervention Initiative
 - STAR K-12
 - Accelerated Reader K-12*
 - Accelerated Math for Interventions K-8
 - Successful Reader K-12
 - English in a Flash and Rosetta Stone for ELLs
 - Fountas and Pinnel Reading Interventions
 - Wilson Reading Program
 - DRA Reading Assessment
- Schedules
 - Extended Blocks for Math and ELA K-8
 - Flex K-6
 - 10th Period 7-8
 - BHS Wednesdays



Going Forward

- New English Language Arts Curriculum Grades 3-8, 11, and 12
- Revised/Updated ELA Curriculum for Grades K-2, 9, 10
- Guided Reading PD K-6
- New/Revised Math Curriculum K-8
- Math Facts in a Flash for Grades 2-5
- Additional Math Investigation Units for Grades 5-8
- Continue PD for CCSS



A yellow pencil is positioned diagonally across the left side of the slide, pointing towards a grid of multiple-choice questions on a test paper. The test paper is slightly blurred and shows various question numbers and options (A, B, C, D).

Going Forward

- iSTEM Initiative 7-8
- Ongoing Differentiation PD 9-12
- Models of Inclusion During PLCs
- APA PD for Teachers
- CST IEP Training
- Co-Teaching Training
- Leadership PD
 - Efficacy Model Framework
 - Effective Communication
 - Leadership Retreat

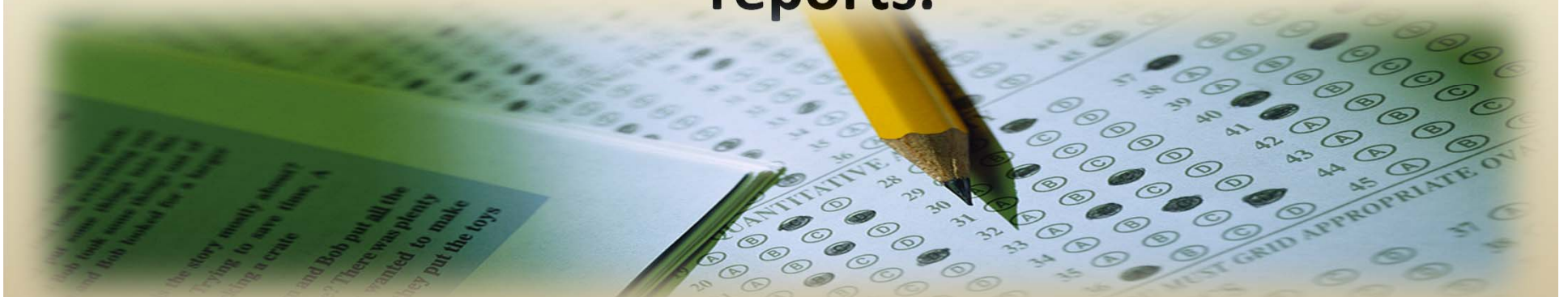
- **Board Members:**

- Ms. Katherine Martinez and Mr. Jason Bing are available to discuss the district's state assessment scores. Please schedule an appointment to discuss further.

- **Parents/Community:**

- Ms. Katherine Martinez and Mr. Jason Bing are available to discuss the district's state assessment scores. Please schedule an appointment to discuss further.

**More information will be provided after NJ
DOE release of additional accountability
reports.**



A close-up photograph of a hand holding a yellow pencil, pointing at a multiple-choice test paper. The paper has several questions with options A, B, C, and D. The text 'Thank You' is overlaid in red. The background is a soft, warm gradient.

Thank You

Bloomfield Public Schools